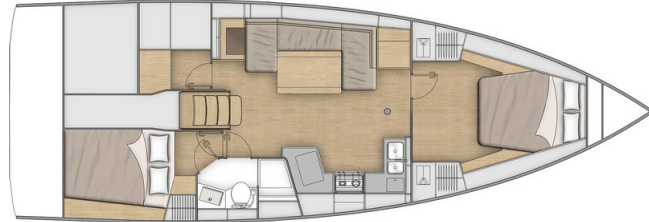
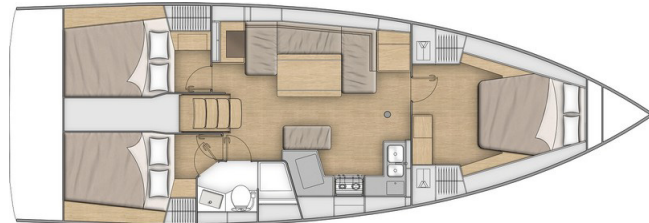




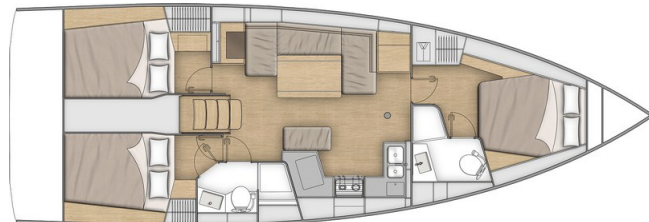
2 cabins 1 head version



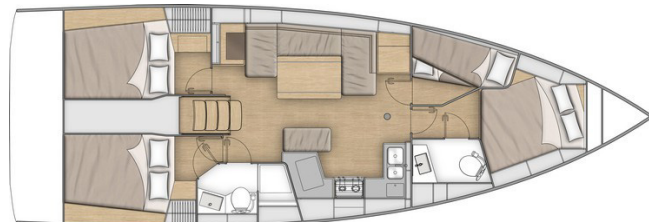
3 cabins 1 head version (+ Sink unit)



3 cabins 2 heads version



4 cabins 2 heads version



## GENERAL SPECIFICATIONS

• L.O.A	12,87m	42'3"
• Hull length	11,99m	39'4"
• L.W.L.	11,70m	38'5"
• Beam	4,18m	13'9"
• Deep draft (Cast iron)	2,17m	7'1"
• Deep ballast weight	2 007kg	4,423 lbs
• Shallow draft (Cast iron)	1,68m	5'6"
• Shallow ballast weight	2 237kg	4,930 lbs
• Performance draught (Cast iron)	2,27m	7'5"
• Performance keel weight	2 004kg	4,417 lbs
• Air draft (with aerial)	18,33m	60'2"
• Performance air draught (with aerial)	18,78m	61'7"
• Light displacement	7 985kg	17,600 lbs
• Fuel capacity (standard)	195L	52 US Gal
• Fresh water capacity (standard)	235L	62 US Gal
• Fresh water capacity (option)	330L	87 US Gal
• Engine power (standard)	45 HP	45 HP

## ARCHITECTS / DESIGNERS

- Naval Architect: Marc Lombard
- Outside & interior design: Nauta Design

## EC CERTIFICATION

- Category A - 10 people
- Category B - 10 people
- Category C - 12 people

## STANDARD SAILS DIMENSIONS

• Furling mainsail (standard)	34,70m <sup>2</sup>	373 sq ft
• Self-tacking jib (standard)	26,90m <sup>2</sup>	290 sq ft
• Classic mainsail	41,80m <sup>2</sup>	450 sq ft
• Furling genoa (105 %)	34,40m <sup>2</sup>	370 sq ft
• Code 0	61,10m <sup>2</sup>	658 sq ft
• I	15,13m	49'8"
• J	4,77m	15'8"
• P - Roller furling mast	14,69m	48'2"
• P - Classical mast	14,83m	48'8"
• E	5,08m	16'8"

## PERFORMANCE (Extended classic mast + 0,45m / 1'6")

• Classic mainsail	43,20m <sup>2</sup>	465 sq ft
• Genoa	36,50m <sup>2</sup>	392 sq ft
• I	15,65m	51'4"
• J	4,78m	15'8"
• P	15,40m	50'6"
• E	5,00m	16'5"

**STANDARD EQUIPMENT****CONSTRUCTION**

- Design in accordance with European Directive requirements and according to CE certification
- Monolithic polyester contact hull
- Monolithic structural inner moulding bonded to the hull (Fabrics - resin)
- Injected deck construction in glass fiber and Saerfoam foam sandwich, covered with non-slip diamond pattern
- Cast iron keel fixed with bolts and stainless steel backing plates
- Twin rudders hung with stainless steel stock
- White coloured hull - Grey metal hull graphics
- 6 Hull portholes

**DECK EQUIPMENT****RIGGING**

- Anodised aluminum mast, deck stepped with in-mast furling system, 2 Aft swept spreaders
- Anodised aluminum boom
- Classic stainless steel single strand standard rigging
- Split backstay
- Rigid boom vang with tackle
- Self-tacking jib rigging with on-deck furler
- Mainsail stay rope on the roof (with 2 chainplates)
- 1 Self-tacking jib track with traveller
- Complete running rigging: Mainsail halyard, Genoa halyard with cleat on mast, Boom topping lift with cleat on mast, Mainsheet, 1 Self-tacking jib sheet
- 9 Clutches
- 2 flag halyards

**WINCHES**

- 2 Self tailing coachroof winches (H40.2 STA) on the coachroof
- 1 Aluminum Speed Grip winch handle
- 1 Winch handle box

**SAILS**

- Furling mainsail Dacron, with UV protection Natural, horizontal cut
- Self-tacking jib Dacron with UV protection Natural, horizontal cut

**MOORING LINES - MOORING**

- Self-draining chain locker - Integrated clench on the deck - Hatch cover
- Single roller stainless steel bow fitting with offset roller
- 6 Aluminum mooring cleats (Length: 300mm / 12")
- Stainless steel chafing plate

**SAFETY ON DECK**

- 2 stainless steel pulpit(s)
- 2 Stainless steel pushpits
- 2 Stainless steel handrails on coachroof
- 1 Lifebuoy support bracket
- Tube welded onto pulpit for flag
- Double guard lines and stainless steel stanchions (605mm / 2')
- Emergency ladder on pushpit

**COCKPIT**

- Self-draining cockpit
- 1 Sail locker/Workshop below starboard cockpit bench
- 1 Wet locker below starboard cockpit bench
- 1 2-section cockpit bottom locker: 1 hull bottom access and 1 gas bottle
- Teak slats on cockpit benches
- Foldaway helmsman foot chock
- 2 Steering wheel consoles: Stainless steel steering wheels (900 mm / 2'11" diameter) - Anthracite leather covering - Steering gear at the helm station - Steering line transmission system - Stainless steel handrail
- 2 Deck access for emergency tiller, below footrest
- 1 Tiller
- 1 Steering compass on the cockpit table
- Engine control, to starboard
- Enginer control panel, to port
- Cockpit table, stainless steel frame, 2 teak leaves, 4 cup holders, 2 stainless steel handrails, Stowage and location for BIB
- 1 2-part PMMA Saloon-type companionway door, Sliding hatch made of PMMA

**SWIM PLATFORM / AFT TRANSOM**

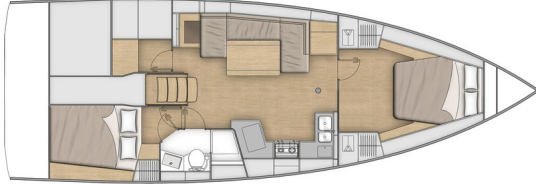
- Fully opening transom, convertible to bathing platform (2,65 x 0,80m / 8'8" x 2'7")
- Intermediate cockpit access step
- Manual opening with hoist
- Teak decking on swim deck
- 1 Fixed, telescopic stainless steel swimming ladder



## INTERIOR

- Alpi walnut woodwork
- Rovere Alévé type laminated floorboards
- Fabric interior upholstery
- Mattress in cabins, HR35kg/m3 foam

### Standard version: 2 Cabins - 1 Head - 1 Workshop



### COMPANIONWAY

Headroom: 1,95m / 6'5"

- Wooden saloon companionway with hanging steps made from laminated moulded wood with non-slip coating
- 2 Stainless steel handrails covered with anthracite leather

### SALOON - PORT

Headroom: 2,00m / 6'7"

- U shaped saloon bench - double density foam
- Saloon table, wooden top, 2 fixed aluminum legs
- Storage under bench seats
- 1 dual USB port (in trim level)
- 1 Hull porthole
- 2 Coaming windows with pleated blinds
- 2 Opening deck hatches with mosquito screen/blinds

### CHART TABLE - PORT

Headroom: 1,97m / 6'6"

- Table with drop fronts - Wooden fiddle
- Switch panel on bulkhead for access to electrical functions
- Stowage against the bulkhead below the chart table
- 1 230 V socket (in trim level)
- 1 Single USB socket
- 1 spotlight
- 1 Opening porthole in coaming
- 1 Fixed coaming window with pleated blind

### GALLEY - STARBOARD

Headroom: 1,91m / 6'3"

- C-shaped galley
- Work top in Compact Clay
- Stainless steel sink 2 rectangular basins - 1 Mixer tap with hot/cold water under pressure
- 1 Gas cooker 2 burners - Stainless steel oven on gimbal - Stainless steel protection handrail
- 190L / 50 US Gal icebox, top opening (with 10 L/3 US Gal freezer)
- Fitted lockers and closed shelving
- Open shelving above stove and sink
- Low-level stowage below sink
- Lower unit: 1 door, 2 drawers
- Bin with access on the work top
- 2 230V Sockets (in trim level)
- 2 Coaming windows with pleated blinds
- 1 Hull porthole
- 1 Flush deck hatch with blind/mosquito net

### OWNER'S CABIN (Forward cabin)

Headroom: 1,94m / 6'4"

- 1 Central double bed (2,03 x 1,60 - 1,31m / 6'8" x 5'3" - 4'4")
- 2 Hanger closets, open storage compartment along the hull
- 1 bedside table on each side of the bed
- 2 Spotlights on the headboard
- 1 dual USB port (in trim level)
- 1 230 V socket (in trim level)
- 3 Flush deck panel with blind/mosquito net
- 2 Portholes with rigid sliding blind

### STARBOARD AFT CABIN

Headroom: 1,93m / 6'4"

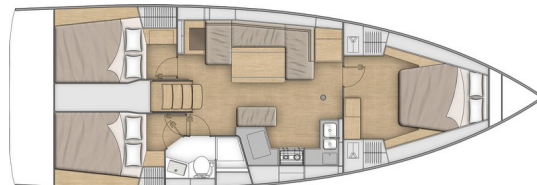
- 1 Double bed (2,04 x 1,37 x 1,21m / 6'8" x 4'6" x 4')
- 1 Hanging locker
- 1 Bed access sideboard
- 1 Spotlight on the headboard
- 1 dual USB port (in trim level)
- 1 230 V socket (in trim level)
- 1 Hull porthole with curtain
- 1 Opening porthole below cockpit seat with curtain

### STARBOARD AFT HEAD COMPARTMENT

Headroom: 1,95m / 6'5"

- Access from the saloon or the starboard aft cabin
- Shower with perspex door - self-draining storage tray - 1 mixer tap - White polyester shower base
- 1 Manual toilet
- 1 80 L / 21 US Gal rigid holding tank
- 1 Polyester basin - 1 Hot/cold water mixer tap
- 1 Cabinet + Storage space under the basin
- 2 Mirrors
- Toilet accessories
- 1 Opening porthole in coaming

### 3 cabins 1 head version



*In the saloon: movable central seating facing the table, no seat back. Built-in stowage locker.*

*The workshop of the standard version converts into the aft starboard cabin with large hanging locker.*

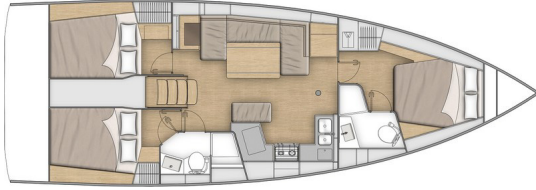
### Port aft cabin

Headroom: 1,93m / 6'4"

- 1 Double bed (2,04 x 1,37 x 1,21m / 6'8" x 4'6" x 4')
- 1 Hanging locker
- 1 Bed access sideboard
- 1 Spotlight on the headboard
- 1 dual USB port (in trim level)
- 1 230 V socket (in trim level)
- 1 Hull porthole with curtain
- 1 Opening porthole below cockpit seat with curtain



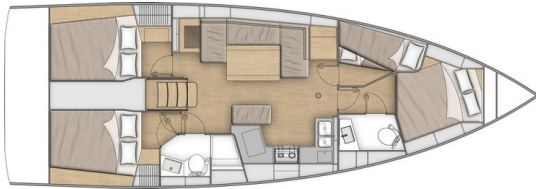
## 3 cabins 2 heads version



The forward cabin has a large head to starboard comprising:

- Private entrance through forward cabin
- Shower with perspex door - self-draining storage tray - 1 mixer tap
- 1 Manual toilet
- 1 50 L / 131 US Gal rigid holding tank
- 1 Polyester basin - 1 Hot/cold water mixer tap
- 1 Cabinet + Storage space under the basin
- 1 Mirror
- Toilet accessories
- 1 Deck hatch with blind/mosquito net

## 4 cabins 2 heads version



### Port side cabin

Headroom: 1,94m / 6'4"

- 2 Bunk beds:
  - Top bunk (1,95 x 0,80 x 0,50m / 6'5" x 2'7" x 1'8")
  - Bottom bunk (1,91 x 0,59 x 0,40m / 6'3" x 1'11" x 1'4")

## ENGINE

- Yanmar engine (Diesel): 45 CV/HP Common rail (4JH45) - Propeller shaft
- Engine control at the starboard helm station - Enginer control panel, to port
- Engine compartment: Soundproofing foam - Ventilation: 3 air intakes and 1 forced air outlets
- 1 Alternator 12 V / 125 Ah
- 1 Rotomoulded diesel tank 195 L / 52 US Gal (under port aft berth)
  - Electronic gauge - Low level alarm - 1 Deck filler
- Filters: Seawater - Diesel - Water separator
- Fixed three blades propeller
- 1 Engine access through companionway (opening with 2 gas struts)
  - 2 Engine access through aft cabins

## ELECTRICITY

- 12V circuit
- 2 service batteries (115 Ah) - 1 Engine battery (120 Ah)
- 1 Power distributor
- 12 V electrical panel on the chart table with single USB socket (Fuses - Voltmeter - Water gauge - Fuel gauge - Battery warning - Fuel warning - Water warning)
- 1 Single USB socket
- Lighting: Overhead lights - Spotlights - LED strip
- Navigation lights (LED): 2 Navigation lights - 1 Anchor light on masthead - 1 Aft starboard stern light
- Wire runs for option cables

## PLUMBING

- 1 rotomoulded freshwater tank (195L / 52 US Gal) under starboard aft berth - 1 Deck filler
- Pressurised electric water pump - Expansion tank - Inline filter
- 40 L / 11 US Gal Electric water heater (engine use)
- 1 Rigid black water holding tank for each WC
- Electrical shower drain pumps
- 1 Electric bilge pump
- 1 Manual bilge pump

## GAS

- 1 2 container for gas bottles in the cockpit locker (0,39m x 0,39m / 1'3" x 1'3" - Height: 0,51m / 1'8")
- Regulator and safety tap

## MISCELLANEOUS ITEMS

- Smoke detector





## CLASSICAL MAST PACK

- Classical  $\frac{9}{10}$  anodised aluminum mast, 2 Spreaders
- Dacron semi Full Batten mainsail
- Lazy Jack and Lazy Bag in Natural colour

## RIGGING PACKS (Incompatible with First Line Pack)

	DOWNWIND PACK	UPWIND PACK	DOWNWIND + UPWIND PACK
<ul style="list-style-type: none"> <li>• Rigging run back to cockpit (except boom topping lift)</li> <li>• 2 Genoa winches (H46.2 STA)</li> <li>• Additional jammers (on the roof for the halyard or on the coaming for the Genoa sheet, depending on the pack)</li> <li>• Polyester bowsprit with integrated anchoring gear and bobstay (for Code 0 and asymmetric spinnaker)</li> <li>• Asymmetrical spinnaker rigging / Code 0</li> <li>• Genoa sheet tracks on side decks (pulls back the traveller on the self-trimming jib rail)</li> <li>• Furling Dacron genoa (to replace the standard self-tacking jib)</li> </ul>	<ul style="list-style-type: none"> <li>• 1 single on roof</li> </ul>	<ul style="list-style-type: none"> <li>• 2 doubles on coaming</li> </ul>	<ul style="list-style-type: none"> <li>• 2 doubles on coaming + 1 single on roof</li> </ul>

## PERFORMANCE PACK

(Incompatible with mainsail arch option - Compatible with all ballast)

*Boast supplied without sail (optional extra: Performance Sails)*

### FIRST LINE ALU PACK (incompatible with the rigging packs)

- Polyester bowsprit with integrated anchoring gear and bobstay (for Code 0 and asymmetric spinnaker)
- Performance Classical aluminum mast, tapered, (Z Diffusion), 2 Aft swept spreaders (+ 0,45m / 1'6")
- Cascading backstay
- Cathedral type Dyform standing rigging
- Flatdeck genoa furler
- Additional jammers: 1 triple jammer on coaming to port and starboard for mainsail sheet, genoa sheet, adjustment of genoa sheet traveller (hauling line) + 1 single jammer on roof for spinnaker halyard/code 0
- Performance running rigging, Dyneema (Mainsail, Genoa, Code 0, Asymmetric spinnaker, Halyards)
- German system (Two-way mainsheet at the helm station)
- Harken pulleys upgrade (in lieu of standard) - 12 E60 blocks + 4 E80 blocks
- Genoa sheet tracks on side decks + Genoa sheets
- 2 Genoa sheet manual winches (H46.2 STA)
- Black composite steering wheels
- Performance hull decoration



## OPTIONS

### NAVIGATION ELECTRONICS B&G

---

- 4G Radar
- Chart table: Multifunction touchscreen B&G Zeus<sup>3</sup> 12" wide wireless (GPS, Chart plotter, Chart reader - Navionics Silver cartography included)  
+ Storage cupboard
- VHF H60 cockpit handset
- AIS 500
- Forward Scan Sensor (Forward underwater vision)

### RIGGING - SAILS

---

- Performance mainsail & Genoa (First Line Pack) / Sail technology: DCX, Natural colour UV protection band, Lazy Jack and Lazy Bag in Natural colour, Full batten mainsail
- Code 0 on furler for mast with in-mast furling or standard mast (Incompatible with First Line Pack)
- Cascading backstay (for traditional mast, standard air draught)
- Self-tacking staysail rigging (Halyard sheave with block + Releasable forestay chainplate + Self-tacking staysail sheet)
- Rigging of self-tacking jib (traveller) used to retain the use of a self-tacking jib with the Upwind and Upwind/Downwind packs

### WINCHES

---

- 1 Port electric primary winch (H40.2 STAEH) in lieu of standard
- 2 Electric genoa winches (H46.2 STAEH) + 1 Winch handle (implies rigging pack)

### HULL - DECK - COCKPIT

---

- Grey "Perle" hull
- Slatted teak cockpit floor
- Slatted teak catwalks
- Luxe polyester/wood cockpit table + Protective cases (Cadet Grey), Stainless steel handrails, Lighting, Central storage (15L / 4 US Gal)
- Luxe polyester cockpit table (supplied without cover), Stainless steel handrails, Lighting, Central storage (15L / 4 US Gal)
- Refrigeration unit for Luxe cockpit table
- Cover for standard cockpit table (Cadet Grey)
- Steering wheels covers (Cadet Grey)
- Luxe (Cadet Grey) sprayhood with LED lighting, Superclear windows
- Luxe (Cadet Grey) bimini (Luxe sprayhood option required)
- Cadet Grey bimini top full closing (Bimini option required)
- Cockpit seats Dolce 51
- Electrically opening bathing platform, Control at steering station + 2 Remote controls
- Retractable bow thruster (Side Power) + Dedicated batteries (50 Ah - 12V)
- Aft fairleads (Aluminium mooring cleats on transom)
- 3 folding blades propeller
- Black composite steering wheels
- Mooring kit:
  - Delta 20 kg/44 lbs anchor (galvanized steel)
  - Chain (Diameter: 10mm /  $\frac{3}{8}$ " - Length: 32m / 105')
  - Line (Diameter: 18mm /  $\frac{11}{16}$ " - Length: 45m / 147')
  - 6 Fenders:
    - 2 L (Diameter: 250mm / 10" - Length: 700mm / 2'4")
    - 4 XL (Diameter: 300mm / 12" - Length: 880mm / 2'11")
  - 4 Moorings lines (Diameter: 18mm /  $\frac{11}{16}$ " - Length: 15m / 49')
- Windlass control in cockpit with chain counter
- Access openings to port and starboard
- Outboard engine bracket (not compatible with Family trim level)
- Shore fresh water supply
- 1 Opening porthole with curtain in the aft cabins (on roof on each side of the companionway)
- Stainless steel pivoting davits



## INTERIOR EQUIPMENT

---

### LAYOUT VERSIONS

- 2 cabins 1 head version
- 3 cabins 1 head version
- 3 cabins 2 heads version
- 4 cabins 2 heads version

### AMBIANCE

- Interior woodwork: Alpi white oak
- Brown oak laminated floors (only with Alpi white oak woodwork)
- Interior upholstery according to colour chart
- Macadamia padding upholstery in the saloon and the cabins (requires Confort trim level)
- Beige or Macadamia padding upholstery in cabins & Headboard of forward cabin (for Family finishing)

### MULTIMEDIA

- TV pre-assembly in the saloon

### DOMESTIC APPLIANCES

- 20 L microwave oven

### ON BOARD COMFORT EQUIPMENT

- Double berth in saloon
- Sink unit in the forward cabin and mirror on bulkhead (for versions with 1 head, 2 and 3 cabins)
- Central bench seat in the saloon (for the 2 cabin version, 1 head)
- Pleated blinds for hull portholes in the saloon
- Sea water/fresh water foot pump in galley
- Extra water tank (330L / 87 US Gal) under berth in forward cabin
- 6,4 KVA 230 V / 50 Hz Generator
- Air conditioning 24 000 BTU
- Forced air heating fuel
- 12 V/230 V air cooler in forward cabin and saloon 8 000 BTU, operating duration: 3 hours on battery, useful when at anchor. Can also be used with engine. Recharge via shore supply or with the engine. (Not compatible with the air conditioning, heating, inverter, lithium battery options, - required Confort or Family trim level)  
Included:
  - 1 Dedicated 12 V/230 V - 2 000 W inverter (this inverter does not allow the onboard comfort options)
  - 3 Lithium batteries (90 Ah)
  - 1 60 Ah service battery charger (replacing the 40 Ah charger for the trim level)
- 12V / 230V inverter - 2 000 W
- Quiet Flush electric WC, fresh water or seawater
- Shore fresh water supply
- 2 90Ah lithium batteries to replace the 4 AGM service batteries (requires trim level)