



M O N T E C A R L O



BENETEAU
AVANT-GARDE IN BOATING

MONTE CARLO 52

One step ahead

LE GRAND LARGE, GIVRAND, MAY 2019



The Monte Carlo 52 will be launched in September 2019 at the Cannes Yachting Festival, marking the introduction of the new generation of luxurious Monte Carlo motor yachts by BENETEAU. This elegant contemporary cruiser made in France is over 16 metres long and boasts enhanced spaces, light and comfort.

AN ELEGANT MOTOR YACHT AT THE CUTTING EDGE OF DESIGN

BENETEAU will launch the new Monte Carlo 52 at the upcoming Cannes Yachting Festival. This exclusive 16.25 metre long and 4.60 metre beam motor yacht is eagerly awaited and will introduce the Monte Carlo “Smart Luxury” generation. A flybridge powerboat, she has inherited the superb genetic makeup of a highly successful range: a very distinctive contemporary design with an elegant profile, wonderfully designed spaces and special attention to detail. The Monte Carlo 52 takes these great strengths one step further. Her distinctive style is the work of a team of world-famous architects and

PRESS CONTACT

Emilie PIRON
Tel +33 (0) 7 86 86 26 45
e.piron@beneteau.fr

WWW.BENETEAU.COM



M O N T E C A R L O



BENETEAU
AVANT-GARDE IN BOATING

designers: Carlo Nuvolari & Dan Lenard for the exterior line, Andréani Design for the interior accommodation. The V-hull was designed in partnership with MICAD. The Monte Carlo 52 is longer and has a greater beam than the previous model, the Monte Carlo 5, which it will be replacing in the Monte Carlo catalogue. Her line is more contemporary and her profile more slender, and she is extremely spacious.

MAGNIFICENT LIVING SPACES BATHED IN LIGHT



Clad with the well-known bow-plate bearing the BENETEAU logo, the new hull offers much more space inside. The very large saloon, like the newly reorganized spaces of the flybridge, the extensive owner suite, the three cabins and two shower rooms unfold to reveal a voluntarily minimalist décor of light-coloured woodwork and linings, which is bang on trend. The Monte Carlo 52 is stunningly bright. With so much room inside, windows literally flood the living spaces on the main deck with light. Her galley is located aft and connects with the cockpit. Her large central lounge and a raised pilothouse have a 360° panoramic view.



PRESS CONTACT

Emilie PIRON
Tel +33 (0) 7 86 86 26 45
e.piron@beneteau.fr

WWW.BENETEAU.COM



M O N T E C A R L O



BENETEAU
AVANT-GARDE IN BOATING

AVANT-GARDE PRODUCTION – THE HALLMARK OF EXCELLENCE



Availing of outstanding industrial facilities and avant-garde production techniques, the Monte Carlo 52 is confirmation that the BENETEAU boatyard focuses on quality control of the highest standards. It is through this unique expertise that a French brand of international repute such as BENETEAU has been able to meet all the demands of the high-end yacht market in this elegant cruiser derived from the Monte Carlo Yacht brand. The Monte Carlo 52 is an exclusive motor yacht, yet her value for money outstrips similar luxury cruisers on the market.

The new Monte Carlo 52 is elegant, luxurious and contemporary, but also spacious and bright. She will be launched in Cannes in September 2019 and will introduce the “Smart Luxury” generation of high-end cruisers by BENETEAU. This sensational boat will be available for exclusive trials this summer on the Mediterranean Sea, at BENETEAU’s official base in Port Ginesta (Spain) inaugurated by BENETEAU last October, and also visible at BENETEAU network dealerships.

PRESS CONTACT

Emilie PIRON
Tel +33 (0) 7 86 86 26 45
e.piron@beneteau.fr

WWW.BENETEAU.COM



M O N T E C A R L O



BENETEAU
AVANT-GARDE IN BOATING

GENERAL CHARACTERISTICS

Length overall	16,25 m - 53'4"
Hull length	14,32 m - 46'12"
Hull beam	4,60 m - 15'1"
Max. draught	1,20 m - 3'11"
Max air draught	7,22 m - 23'8"
Light displacement	15 052 kg - 33 175 lbs
Displacement fully loaded	20 768 kg - 95 292 lbs
Berths	6 + 1

ARCHITECT / DESIGNERS

Architect: AMEDEO MIGALI
Outside design: NUVOLARI & LENARD
Interior design: ANDREANI

PROVISIONAL EC CATEGORY

B12 / C12

PRESS CONTACT

Emilie PIRON
Tel +33 (0) 7 86 86 26 45
e.piron@beneteau.fr

WWW.BENETEAU.COM



M O N T E C A R L O



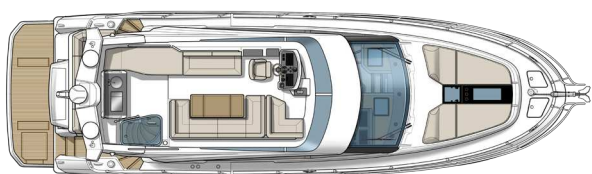
BENETEAU
AVANT-GARDE IN BOATING



Profil



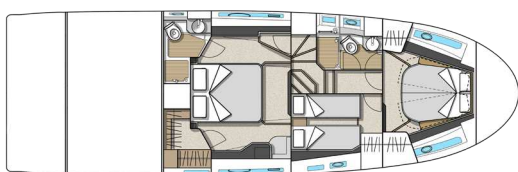
Profil - T-Top



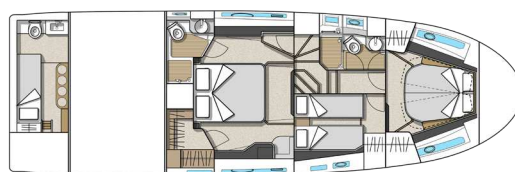
Flybridge



Main deck



Lower deck



Lower deck with crew

PRESS CONTACT

Emilie PIRON
Tel +33 (0) 7 86 86 26 45
e.piron@beneteau.fr

WWW.BENETEAU.COM