



# *Gran turismo 36*



BENETEAU







## LOVE AT FIRST SIGHT

The Gran Turismo range of sports cruisers will charm and thrill you. Racy lines draw the eye while the airy, spacious and secure cockpit is a delight. Whether in 'dolce vita' or sporting mode, her high performance twin engines ensure that those who step aboard will live life to the fullest.

---









**Inboard**



**Outboard**





*GT36*



# ELEGANCE, QUALITY FITTINGS AND SENSATIONS GUARANTEED

The Gran Turismo 36 is the latest express cruiser to join the BENETEAU powerboat dealer offering. She is the first Gran Turismo developed in conjunction with our product design team in the USA and built here in Cadillac, Michigan. Our first Grand Turismo available with an optional outboard engine package, she presents 3 key attributes: modernity, accessibility, and performance.

---

NUVOLARI & LENARD  
Design

ANDREANI DESIGN  
Interior Design

BENETEAU POWER BOATS  
Naval Architect





# ELEGANCE

---

In her overall design, the Gran Turismo 36's meticulous attention to detail demonstrates her perfect balance between strong sporty temperament and practical features, making life onboard easy and luxurious.

Accessibility on the Gran Turismo 36 is incomparable. A private cabin, welcome entertainment spaces and optional platform extension create an exceptional boating environment. The combination of protection, privacy and luxurious appointments make the Gran Turismo 36 the ultimate craft to explore your favorite boating destinations.











# QUALITY FITTINGS

Down below, the forward stateroom is optimized to surpass expectations with a private and well-equipped sleeping space with large storage spaces. The aft cabin provides two berths separated by a door for onboard guests.



Midship you will find a cozy lounge to port with a functional galley space with high quality appliances. A best in class head arrangement offers separate shower and toilet spaces completely partitioned from the vanity.



# SENSATIONS GUARANTEED

---

The GT36 has the design elements that define the DNA of the BENETEAU Gran Turismo range. The exterior on deck layout is fully optimized for comfort and entertaining. While the boat is an express cruiser stylistically, her appointments provide for your ideal day on the water.







*\*Standard exterior package*

Entertaining large groups is made easy with the cleverly placed wetbar and the aft sunbed which converts into additional seating at the table. Additionally, the electrically controlled sunroof and optional cockpit air conditioning keep guests comfortable so they can enjoy boating in all climates.



# R36

INBOARD PROFILE



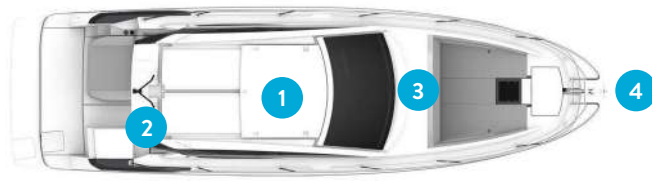
## TECHNICAL SPECIFICATIONS

DESIGN	Nuvolari Lenard
LENGTH OVERALL	11,56 m / 37'11"
HULL LENGTH	11,27 m / 37'
OVERALL WIDTH	3,52 m / 11'7"
HULL BEAM	3,46 m / 11'6"
LIGHT DISPLACEMENT CE	7 215 kg / 15 906 lbs
AIR DRAFT	4,15 m / 13'7"
DRAFT	1,15 m / 3'9"
FUEL TANK	2 x 380 L / 2 x 100 US Gal
WATER TANK	150 L / 40 US Gal
MAXIMUM ENGINE POWER	258 kW - 2 x 350 CV / HP
CE CERTIFICATE	B8 / C10

\* Included: Radar support

**VOLVO  
PENTA**





GT36 HARDTOP



GT36 LOWER DECK



GT36 EXTERIOR/COCKPIT

- 1 Electric Opening Roof
- 2 Radar Mast
- 3 Wipers + Washing Kit
- 4 Anchoring kit and windlass (option)
- 5 Large swim platform
- 6 Aft sunpad with large storage underneath (6'3" x 5'5")
- 7 U shaped cockpit accomodating up to 6 people.
- 8 2 pilot and copilot bolster seats
- 9 Sunpad integrated into deck
- 10 Large anchor and fender storage
- 11 Twin motorization
- 12 Large central access to the cockpit
- 13 Wet bar including sink, storage, grill, fridge
- 14 *Two large 12" screens on dashboard at helm station*
- 15 2 separated cabin with double berth
- 16 STORAGE
- 17 Salon with table and seating for 3 people
- 18 Head with separated shower, sink and electric toilet
- 19 Equipped galley (microwave, cooktop, sink, storage, fridge)













OUTBOARD PROFILE



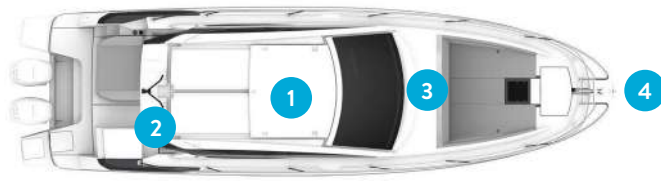
## TECHNICAL SPECIFICATIONS

DESIGN	Nuvolari Lenard
LENGTH OVERALL	11,56 m / 37'11"
HULL LENGTH	11,27 m / 37'
OVERALL WIDTH	3,52 m / 11'7"
HULL BEAM	3,46 m / 11'6"
LIGHT DISPLACEMENT CE	6 736 kg / 14 846 lbs
AIR DRAFT	4,15 m / 13'7"
DRAFT	1,15 m / 3'3"
FUEL TANK	2 x 380 L / 2 x 100 US Gal
WATER TANK	150 L / 40 US Gal
MAXIMUM ENGINE POWER	258 kW - 2 x 350 CV / HP
CE CERTIFICATE	B8 / C10

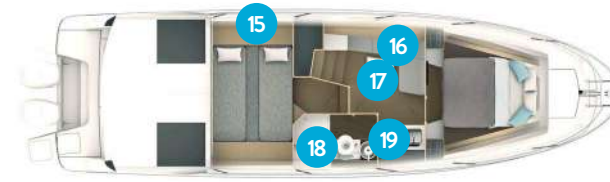
\* Included: Radar support

**VOLVO  
PENTA**

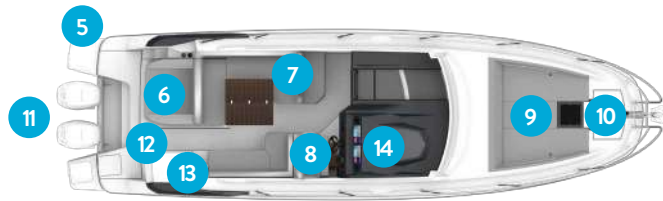




GT36 HARDTOP



GT36 LOWER DECK



GT36 EXTERIOR/COCKPIT

1 Electric Opening Roof

2 Radar Mast

3 Wipers + Washing Kit

4 Anchoring kit and windlass (option)

5 Large swim platform

6 Aft sunpad with large storage underneath (6'3" x 5'5")

7 U shaped cockpit accomodating up to 6 people.

8 2 pilot and copilot bolster seats

9 Sunpad integrated into deck

10 Large anchor and fender storage

11 Twin motorization

12 Large central access to the cockpit

13 Wet bar including sink, storage, grill, fridge

14 Two large 12" screens on dashboard at helm station

15 2 separated cabin with double berth

16 STORAGE

17 Salon with table and seating for 3 people

18 Head with separated shower, sink and electric toilet

19 Equipped galley (microwave, cooktop, sink, storage, fridge)







## INNOVATIONS AND PARTNERS

As part of the nautical industry's leading international group, the BENETEAU boatyard must meet the highest standards. Working with the best partners in each specialized area contributes to our expertise and success.



**GARMIN.**

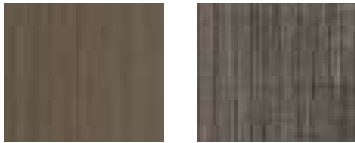
Big international manufacturer of electronics for recreational craft, Garmin is recognized for its highly innovative products, which are simple to use and very reliable. With a large network of dealers across the world, Garmin provides an international after-sales service and endeavours to provide its users with a first-class service.

[www.garmin.com](http://www.garmin.com)

# ATMOSPHERE

## STANDARD

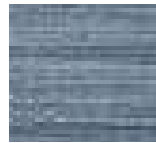
### WOOD BOIS



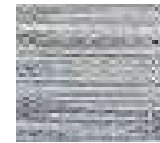
Walnut alpi + Laminated brown oak floors

## OPTIONS

### FLOORS PLANCHERS



Infinity ash carpet  
*Moquette ivoire*



Infinity dune carpet

# OUTDOOR / INDOOR

## STANDARD

### UPHOLSTERY SELLERIE



Nautilus Asparagus / cont

- Interior  
*Intérieure*



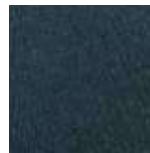
Angora

### HULL COLOUR COULEUR DE COQUE



White  
*Blanc*

### CANVAS COULEUR DE COQUE



Graphite  
*Graphite*

### COVERS COULEUR DE COQUE

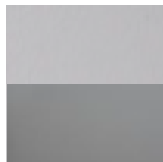


White  
*Blanc*



Silvertex graphite / plata / ice

- Exterior  
*Extérieure*



Nautilus Asparagus / concrete













**WARNING**

For Use Only! Cabinet, Surface & Surrounding Deck Material

Do not use this sink for anything other than its intended purpose. Do not use this sink for anything other than its intended purpose. Do not use this sink for anything other than its intended purpose.

Do not use this sink for anything other than its intended purpose. Do not use this sink for anything other than its intended purpose. Do not use this sink for anything other than its intended purpose.

Do not use this sink for anything other than its intended purpose. Do not use this sink for anything other than its intended purpose. Do not use this sink for anything other than its intended purpose.

## BE A PART OF OUR HISTORY *ENTREZ DANS NOTRE HISTOIRE*

Choosing a BENETEAU is trusting 135 years of experience and passion, keeping “best value” constantly in mind.  
*Choisir BENETEAU, c’est faire confiance à 135 ans d’expérience et de passion, nourris au quotidien par l’esprit ‘best for value’.*



**BENETEAU**  
AVANT-GARDE IN BOATING

WWW.BENETEAU.COM

**A design office staffed by  
120 technicians and engineers**

*Un bureau d’études de  
120 techniciens et ingénieurs*



**A unique dealer network:  
400 dealers located all over the world**

*Un réseau de distribution unique :  
400 concessionnaires répartis  
dans le monde entier*



**An after-sales service with  
50 highly qualified members of staff**

*Un SAV réunissant 50 professionnels  
ultra-qualifiés*



**12 production sites, including  
8 in Vendée, where the group  
started out**

*12 sites de production, dont 8 situés  
en Vendée, dans le berceau du Groupe*



**7-year structural warranty  
and 3 years for parts and labor**

*7 ans de garantie structurelle,  
3 ans pour les pièces et la main d’œuvre*









**BENETEAU**  
AVANT-GARDE IN BOATING

[WWW.BENETEAU.COM](http://WWW.BENETEAU.COM)